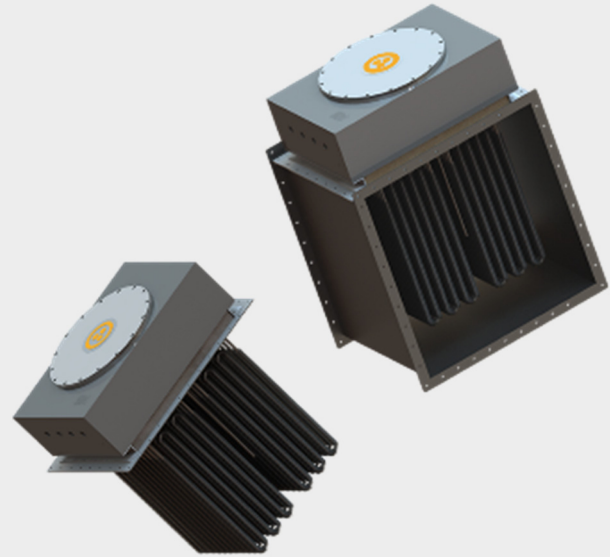


## TYPE SADH – SOLID TO AIR DUCT HEATER (Flameproof)

### Features:

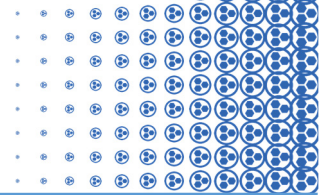
- ➔ Flameproof Control Box
- ➔ Control box enclosure material: stainless steel or carbon steel
- ➔ Heating elements sheath material: stainless steel
- ➔ Heating elements fins material: stainless steel
- ➔ Overheated protection
- ➔ Application: duct system



Type SADH solid to air duct heater is designed for duct system heating application in industrial hazardous areas with potentially explosive gas and/or dust. The heat resource is electric resistance wire (solid). The heating medium is air.

Certification:	
Notification Body:	DNV
Certification Body:	LCIE
Certificate:	IECEX and ATEX
Certificate No.:	LCIE 14 ATEX 3060X
	IECEX LCIE 14.0022X
Group:	II
Category:	2 G D
Gas Group:	IIB or IIC
Temperature Class:	T4...T1
Ambient Temperature:	-40°C to +55°C
Ingress Protection:	IP66
Marking:	II 2 G D, Exd IIB or IIC T4...T1 Gb ; Extb, IIIB or IIIC T107°C or T174°C or T270°C or T400°C Db; -40°C<Tamb<+55°C

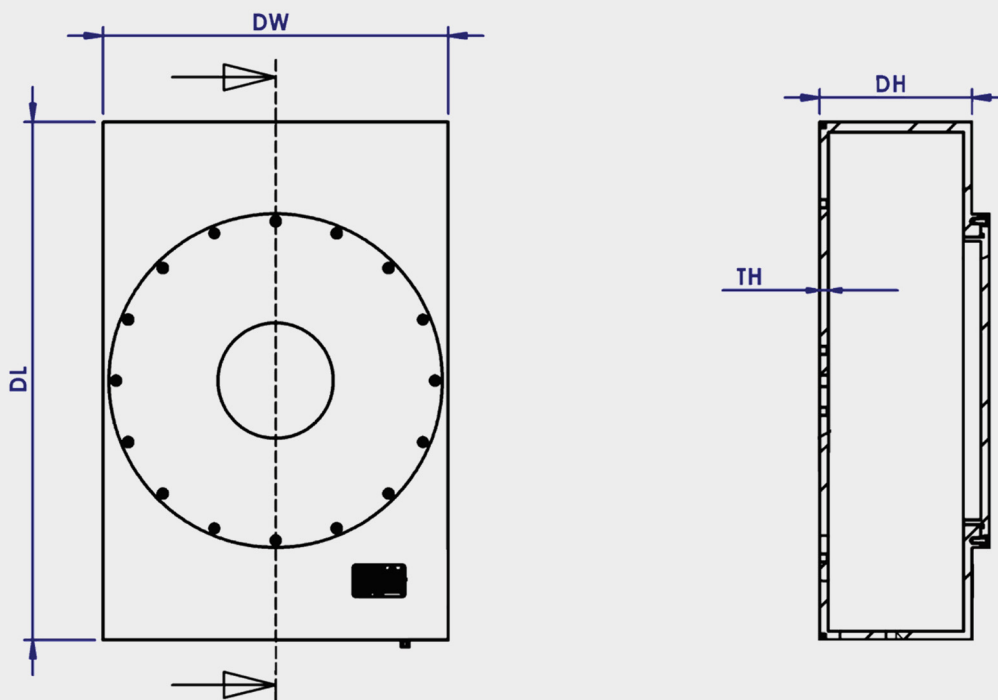


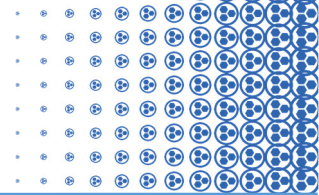
**Mechanical Specification:**

Enclosure Material:	Stainless Steel or Carbon Steel
Heating Elements Sheath Material:	Stainless Steel
Heating Elements Quantity:	$\leq 34$ PCS for Welding Fixing Type $\leq 22$ PCS for Screwing Fixing Type
Product Finish:	Power Coating for Carbon Steel Enclosure (Thickness < 0.2mm) Natural Finish for Stainless Steel Enclosure
Finish Color:	Metallic Gray for Powder Coating or Other Colors (Specify) Natural Metallic Color for Stainless Steel Products

**Electrical Specification:**

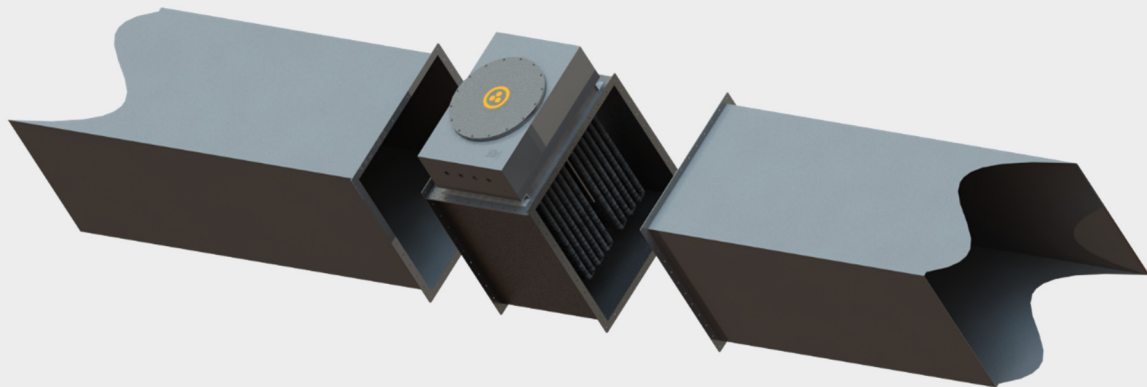
Heating Resource:	Electric Resistance Wire
Rated Voltage:	Max 690VAC
Frequency:	50 or 60Hz
Rated Power Output:	Up to 35kW

**Installation Dimension:**

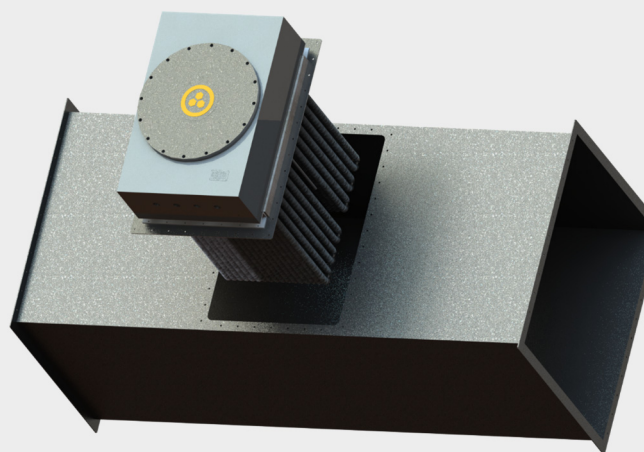


Control Box Dimension Chart DH=250								
1-10KW			11-20KW			21-35KW		
DL	DW	TH	DL	DW	TH	DL	DW	TH
400-600	250-400	10	600-900	450-600	12	900-1500	600-900	15

**Mounting:**

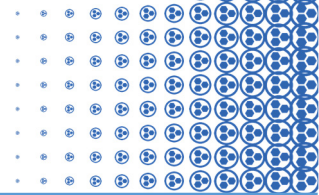


Flange Type Mounting with Duct Section

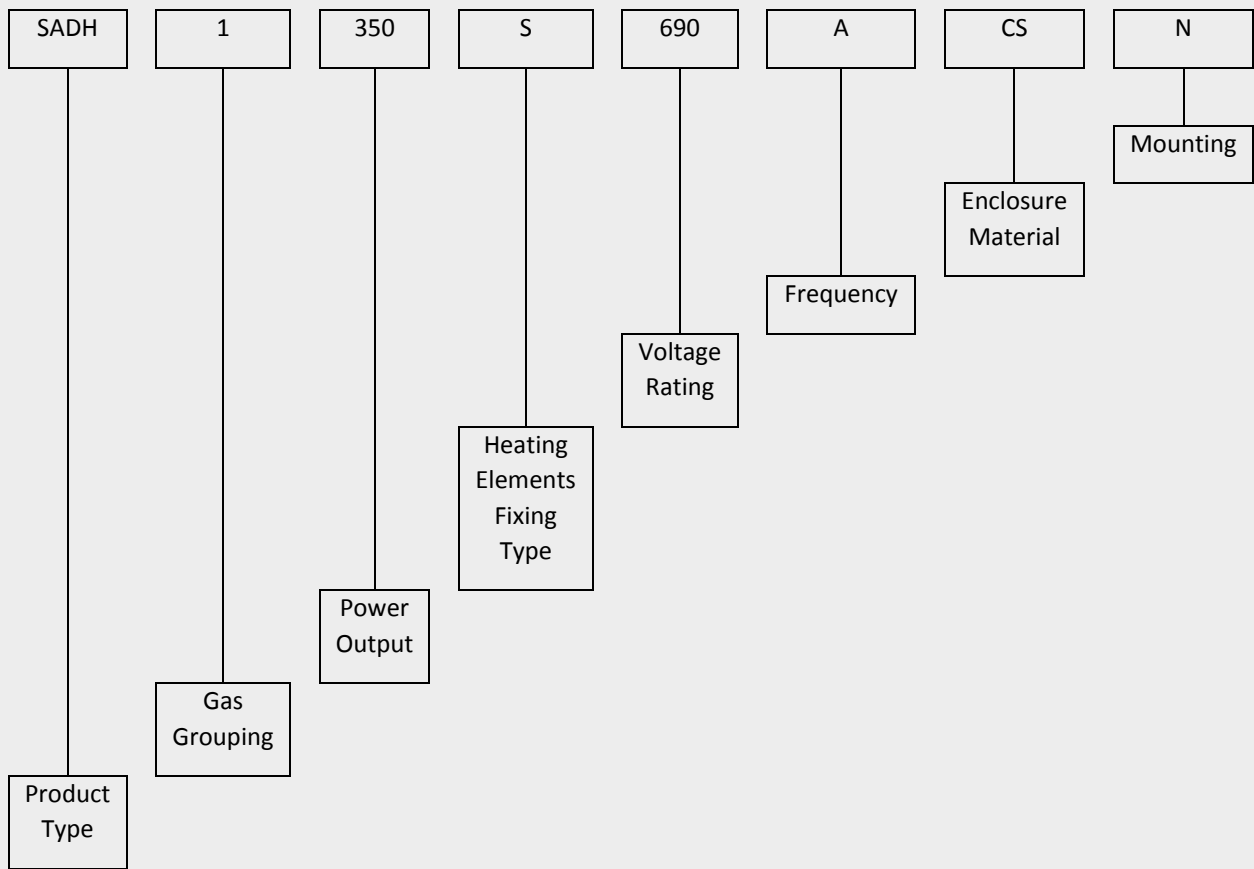


Insertion Type Mounting without Duct Section



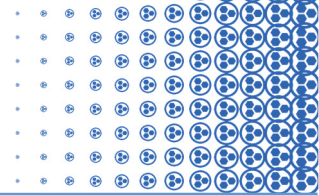


### Type Explanation\*1:



Note 1: Please refer to the following ordering table for more information.



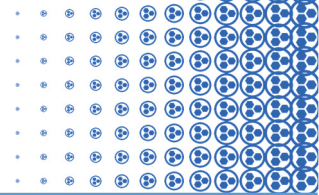


### Ordering Table:

Please refer to the below ordering code table. If you need more information, please contact our sales representative for assistance.

Product Type	Gas Grouping	Power Output (KW)			Heating Elements Type	Voltage Rating	Frequency (Hz)	Enclosure Material	Duct Section	
		Tens	Ones	Tenths						
SADH	1-Gas Group IIB	0	0	0	W-Fixed by Welding	200-200V	A-50	CS-Carbon Steel	D-Duct Section	
		1	1	1		220-220V				
		2	2	2		240-240V				
		3	3	3		380-380V				
			4	4		400-400V				
	2-Gas Group IIC			5	5	S-Fixed by Screwing	440-440V	B-60	SS-Stainless Steel	N-No Duct Section
				6	6		690-690V			
				7	7		XXX- Others (Specify)			
				8	8					
				9	9					





E.g.: SADH-1-025-W-400-B-CS-D

SADH	1	025	W	400	B	CS	D
Product Type	Gas Group IIB	2.5KW	Heating Elements Fixed by Welding	400VAC	60Hz	Carbon Steel	Duct Section

E.g.: SADH-2-350-S-690-A-SS-N

SADH	2	350	S	690	A	SS	N
Product Type	Gas Group IIC	35KW	Heating Elements Fixed by Screwing	690VAC	50Hz	Stainless Steel	No Duct Section

